

Batch Metadata Editing in Dspace 1.6

<http://researchspace.auckland.ac.nz>

**Leonie Hayes
Research Repository Manager**

August 2009

1. Batch Metadata Editing – What is this for?
2. Screen shots of menu items
3. Exporting for editing – steps to follow
4. Working in Open Office and Excel
5. Adding items
6. Adding mapped collections

- What can you export?
 - You can export a whole collection or individual records

- What is this useful for?
 - Batch modifying existing records
 - Creating a template for a collection exporting this and then adding items
 - Adding new metadata records
 - Mapping additional collections

- What is the scope?
 - You can only use this for metadata, use the existing batch import for DSpace to upload bitstreams or files.

In the next software release you will notice the addition of this function – Export Metadata



Admin Tools

- Edit...
- Item Mapper
- Edit Submitters
- Export Collection
- Export (migrate) Collection
- Export metadata
- [Admin Help...](#)

In the admin menu you will notice an additional item– Import Metadata

- [Communities/ Collections](#)
- [E-people](#)
- [Groups](#)
- [Items](#)
- [Metadata Registry](#)
- [Bitstream Format Registry](#)
- [Workflow](#)
- [Authorization](#)
- [Edit News](#)
- [Edit Default License](#)
- [Supervisors](#)
- [Statistics](#)
- [Import metadata](#)
- [Withdrawn Items](#)
- [Help](#)
- [Log Out](#)

[ResearchSpace@Auckland \(1.5.2\)](#) >

Administration Tools

Please select an operation from the navigation bar on the left.



Click on the export metadata and
save file in CSV format

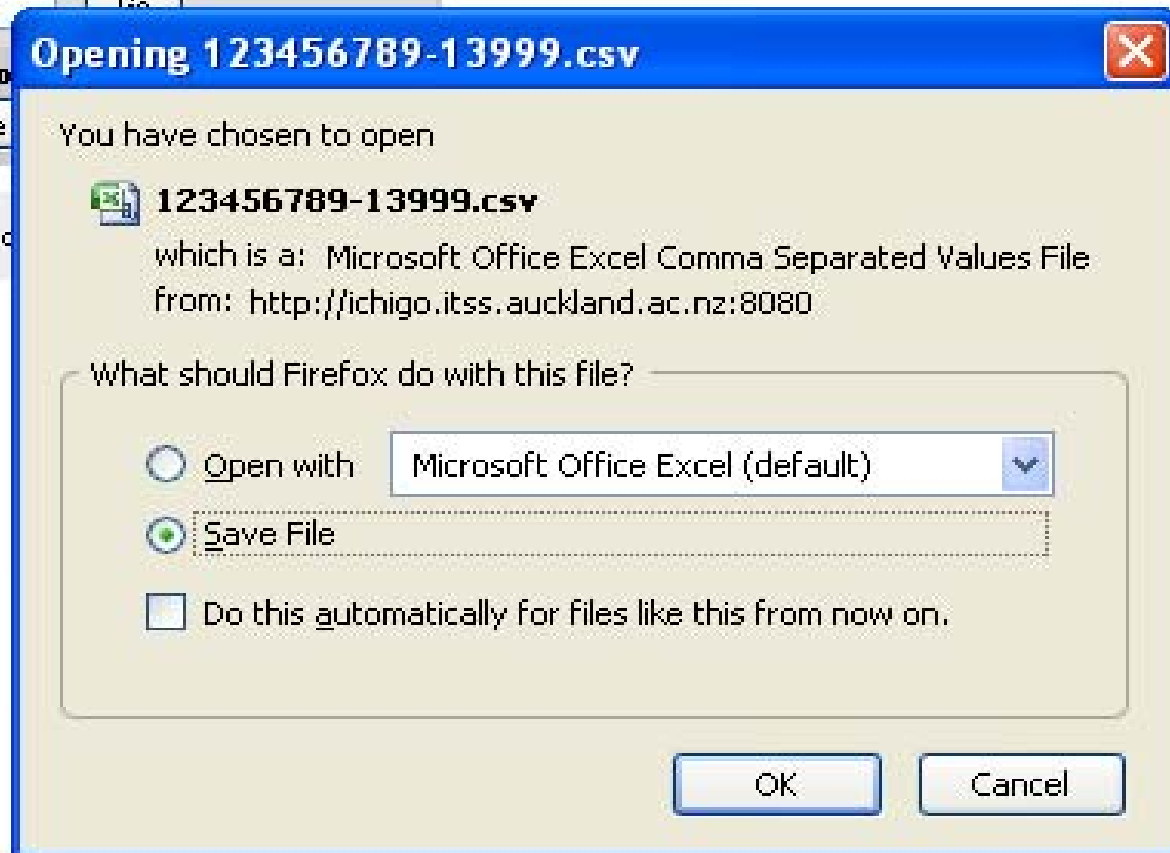
nal Articles 2009 ▼

Go

or bro

ject Title

ily e-mail no



Text Import - [template22july2009.csv]

Import

Character set: **Unicode (UTF-8)**

From row: **1**

Separator options

Fixed width

Separated by

Tab Comma Other

Semicolon Space

Merge delimiters Text delimiter: **"**

Fields

Column type: **Text**

	Text	Text	Text
1	id	collection	dc.contributor.author[en_US]
2	14642	123456789/12631	Baker, G.E. Koelmeyer, T.D.
3	+	123456789/13999	Zhang, C Basteal, A.J.
4	+	123456789/13999	Wu, J Deng, C Shao, X Xie, S.Q.
5	+	123456789/13999	Irzik, G Nola, R.
6	+	123456789/13999	Addis,, D.R Sacchetti,, D.C Ally,, B
7	+	123456789/13999	Prede, P Dwyer, C Maxner, J Delmas

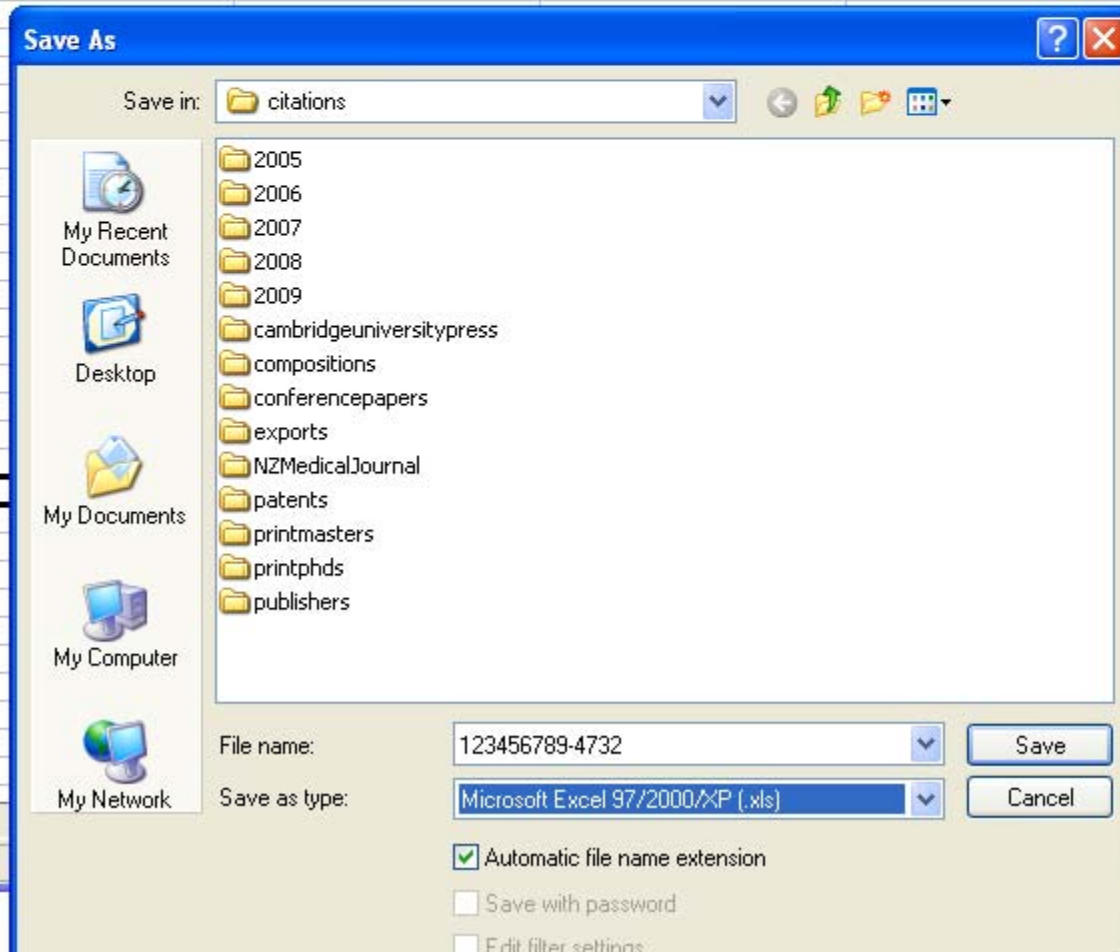
1. With CSV files we have found it better to use Open Office to open the spreadsheet – these screen shots are using the Open Office Calc application
2. Character set to Unicode (UTF8) important, and select all the columns by clicking on the top left upper corner change to text.
3. If you open the csv file with Excel you don't get the same options to open the file in Unicode and text column types. Results: dates and other fields like issn are opened as numbers and its very difficult to make them behave like text. Also long fields like abstract maybe truncated.

	A	B	C	D	E	F	G	H	I	J	K	L	M	N	O	
1	id	collection	dc.contributor.author	dc.date.accessioned	dc.date.available	dc.date.issued	dc.identifier.cit	dc.identifier.isi	dc.identifier.ot	dc.identifier.uri	dc.description	dc.description	dc.description	dc.description	dc.description	dc.type
2	14474	123456789/13999	Gorman, D.F. Brooks, P	2009-07-17T01:00:00Z	2009-07-17T01:00:00Z	2009	Medical Journ	0025729X	eid=2-s2.0-5871177083X	http://hdl.handle.net/1177083X	Made available Previous issue	Gorman, D.F.,	http://sfx.auckland.ac.nz/	Medical Journ	On solutions to	Jour
3	14499	123456789/13999	Plester, B.	2009-07-17T01:00:00Z	2009-07-17T01:00:00Z	2009	Kotuitui 4 (1),	1177083X	eid=2-s2.0-6571177083X	http://hdl.handle.net/1177083X	Made available Previous issue	Plester, B., De	http://sfx.auckland.ac.nz/	Kotuitui	Healthy humou	Jour
4	14544	123456789/13999	Beaglehole, R. Bonita, F	2009-07-17T01:00:00Z	2009-07-17T01:00:00Z	2009	New Zealand	11758716	eid=2-s2.0-59711758716	http://hdl.handle.net/11758716	Made available Previous issue	Beaglehole, R.	http://sfx.auckland.ac.nz/	New Zealand	Heart health in	Jour
5	14382	123456789/13999	Nichol, S. Deng, Y. Hor	2009-07-17T01:00:00Z	2009-07-17T01:00:00Z	2009	Journal of the	03036758	eid=2-s2.0-67711758716	http://hdl.handle.net/03036758	Made available Previous issue	Nichol, S., Sch	http://sfx.auckland.ac.nz/	Journal of the	Preservation o	Jour
6	14559	123456789/13999	Holmes, M.	2009-07-17T01:00:00Z	2009-07-17T01:00:00Z	2009	Electronic Cor	1083589X	eid=2-s2.0-61711758716	http://hdl.handle.net/1083589X	Made available Previous issue	Holmes, M., De	http://sfx.auckland.ac.nz/	Electronic Cor	The scaling lim	Jour
7	14560	123456789/13999	Lawton, B.A. Rose, S.E	2009-07-17T01:00:00Z	2009-07-17T01:00:00Z	2009	BMJ 338 (7686)	09598146	eid=2-s2.0-61711758716	http://hdl.handle.net/09598146	Made available Previous issue	Lawton, B.A.,	http://sfx.auckland.ac.nz/	BMJ	Exercise on pr	Jour
8	14577	123456789/13999	Boutros, N. Davison, M.	2009-07-17T01:00:00Z	2009-07-17T01:00:00Z	2009	Journal of the	00225002	eid=2-s2.0-64711758716	http://hdl.handle.net/00225002	Made available Previous issue	Boutros, N., D	http://sfx.auckland.ac.nz/	Journal of the	Conditional reir	Jour
9	14582	123456789/13999	Shooter, D. Brimblecom	2009-07-17T01:00:00Z	2009-07-17T01:00:00Z	2009	International Jc	09574352	eid=2-s2.0-57711758716	http://hdl.handle.net/09574352	Made available Previous issue	Shooter, D., S	http://sfx.auckland.ac.nz/	International Jc	Air quality inde	Jour
10	14592	123456789/13999	Alatas, V. Cameron, L.	2009-07-17T01:00:00Z	2009-07-17T01:00:00Z	2009	Southern Ecor	00384038	eid=2-s2.0-59711758716	http://hdl.handle.net/00384038	Made available Previous issue	Alatas, V., Wo	http://sfx.auckland.ac.nz/	Southern Ecor	Gender, cultur	Jour
11	14594	123456789/13999	Morgan-Smith, R.K. Ellic	2009-07-17T01:00:00Z	2009-07-17T01:00:00Z	2009	Journal of For	0895173X	eid=2-s2.0-59711758716	http://hdl.handle.net/0895173X	Made available Previous issue	Morgan-Smith,	http://sfx.auckland.ac.nz/	Journal of For	Enhancement	Jour
12	14596	123456789/13999	Masuda, Y. Mashima, R	2009-07-17T01:00:00Z	2009-07-17T01:00:00Z	2009	Nippon Serami	18820743	eid=2-s2.0-58711758716	http://hdl.handle.net/18820743	Made available Previous issue	Masuda, Y., D	http://sfx.auckland.ac.nz/	Nippon Serami	Relationship br	Jour
13	14057	123456789/13999	Young, P.G. Valani, R.	2009-07-17T01:00:00Z	2009-07-17T01:00:00Z	2009	Journal of bac	10985530	eid=2-s2.0-67711758716	http://hdl.handle.net/10985530	Made available Previous issue	Young, P.G., S	http://sfx.auckland.ac.nz/	Journal of bac	The crystal str	Jour
14	14071	123456789/13999	Park, J.	2009-07-17T01:00:00Z	2009-07-17T01:00:00Z	2009	Anthropologic	00035459	eid=2-s2.0-67711758716	http://hdl.handle.net/00035459	Made available Previous issue	Park, J., Unive	http://sfx.auckland.ac.nz/	Anthropologic	Concepts of hi	Jour
15	14082	123456789/13999	Beatty, S. Stevens, W.	2009-07-17T01:00:00Z	2009-07-17T01:00:00Z	2009	The New Zeal	11758716	eid=2-s2.0-67711758716	http://hdl.handle.net/11758716	Made available Previous issue	Beatty, S., Fac	http://sfx.auckland.ac.nz/	The New Zeal	Lung cancer p	Jour
16	14084	123456789/13999	Pasley, T. Poole, P.	2009-07-17T01:00:00Z	2009-07-17T01:00:00Z	2009	The New Zeal	11758716	eid=2-s2.0-66711758716	http://hdl.handle.net/11758716	Made available Previous issue	Pasley, T., Fac	http://sfx.auckland.ac.nz/	The New Zeal	Characteristics	Jour
17	14085	123456789/13999	Dare, A.J. Petrie, K.J. B	2009-07-17T01:00:00Z	2009-07-17T01:00:00Z	2009	The New Zeal	11758716	eid=2-s2.0-66711758716	http://hdl.handle.net/11758716	Made available Previous issue	Dare, A.J., Fac	http://sfx.auckland.ac.nz/	The New Zeal	Prepared for p	Jour
18	14086	123456789/13999	Murphy, M. Antia, U. Ch	2009-07-17T01:00:00Z	2009-07-17T01:00:00Z	2009	The New Zeal	11758716	eid=2-s2.0-66711758716	http://hdl.handle.net/11758716	Made available Previous issue	Murphy, M., Sc	http://sfx.auckland.ac.nz/	The New Zeal	Party pills and	Jour
19	14091	123456789/13999	Andrade, A.D.	2009-07-17T01:00:00Z	2009-07-17T01:00:00Z	2009	Qualitative Res	10520147	eid=2-s2.0-66711758716	http://hdl.handle.net/10520147	Made available Previous issue	Andrade, A.D.	http://sfx.auckland.ac.nz/	Qualitative Res	Interpretive res	Jour
20	14107	123456789/13999	Mittal, A. Phillips, A.R. Iv	2009-07-17T01:00:00Z	2009-07-17T01:00:00Z	2009	JOP : Journal c	15908577	eid=2-s2.0-66711758716	http://hdl.handle.net/15908577	Made available Previous issue	Mittal, A., Dep	http://sfx.auckland.ac.nz/	JOP : Journal c	The proteome	Jour
21	14109	123456789/13999	Mitchell, E.A.	2009-07-17T01:00:00Z	2009-07-17T01:00:00Z	2009	Developmental	00121630	eid=2-s2.0-66711758716	http://hdl.handle.net/00121630	Made available Previous issue	Mitchell, E.A.,	http://sfx.auckland.ac.nz/	Developmental	What is the me	Jour
22	14118	123456789/13999	Worthley, D.L. Ruszkiev	2009-07-17T01:00:00Z	2009-07-17T01:00:00Z	2009	Stem Cells 27	10665099	eid=2-s2.0-67711758716	http://hdl.handle.net/10665099	Made available Previous issue	Worthley, D.L.	http://sfx.auckland.ac.nz/	Stem Cells	Human gastroi	Jour
23	14632	123456789/13999	Aw, K.C. Tsakadze, Z.	2009-07-17T01:00:00Z	2009-07-17T01:00:00Z	2009	Scripta Materie	13596462	eid=2-s2.0-53711758716	http://hdl.handle.net/13596462	Made available Previous issue	Aw, K.C., Dep	http://sfx.auckland.ac.nz/	Scripta Materie	Influence of ra	Jour
24	14633	123456789/13999	Campbell, D.L.M. Haube	2009-07-17T01:00:00Z	2009-07-17T01:00:00Z	2009	Behavioural Pr	03766357	eid=2-s2.0-57711758716	http://hdl.handle.net/03766357	Made available Previous issue	Campbell, D.L.	http://sfx.auckland.ac.nz/	Behavioural Pr	Spatial and bel	Jour
25											Made available					

- The multiple metadata fields are delimited with a || double pipe character, but it will be possible to choose your own delimiter character.
- The most important parts are the id and collection.

B23 =

	A	B	C	D	E	F
1	id	collection	dc.contributor.author[en]	dc.date.accessioned	dc.date.available	dc.date.issued[en]
2	4745	123456789/1 2388	Baker G.E. Koelmeyer T.D.	2008-11-21T03:32:35Z	2008-11-21T03:32:35Z	1999
3						
4						
5						
6						
7						
8						
9						
10						
11						
12						
13						
14						
15						
16						
17						
18						
19						
20						
21						
22						
23						
24						
25						
26						
27						
28						
29						
30						
31						
32						
33						
34						



Interchanging Open Office and Excel

- You may find it easier to save the csv file into Excel format and make your modifications.
- When completed save back into csv format

What fields?

- 1.Strip out fields date accessioned and provenance etc
- 2.Strip out any fields you don't want to correct, and just leave the fields you want to update
- 3.Leave any fields if you want to delete the content from those fields

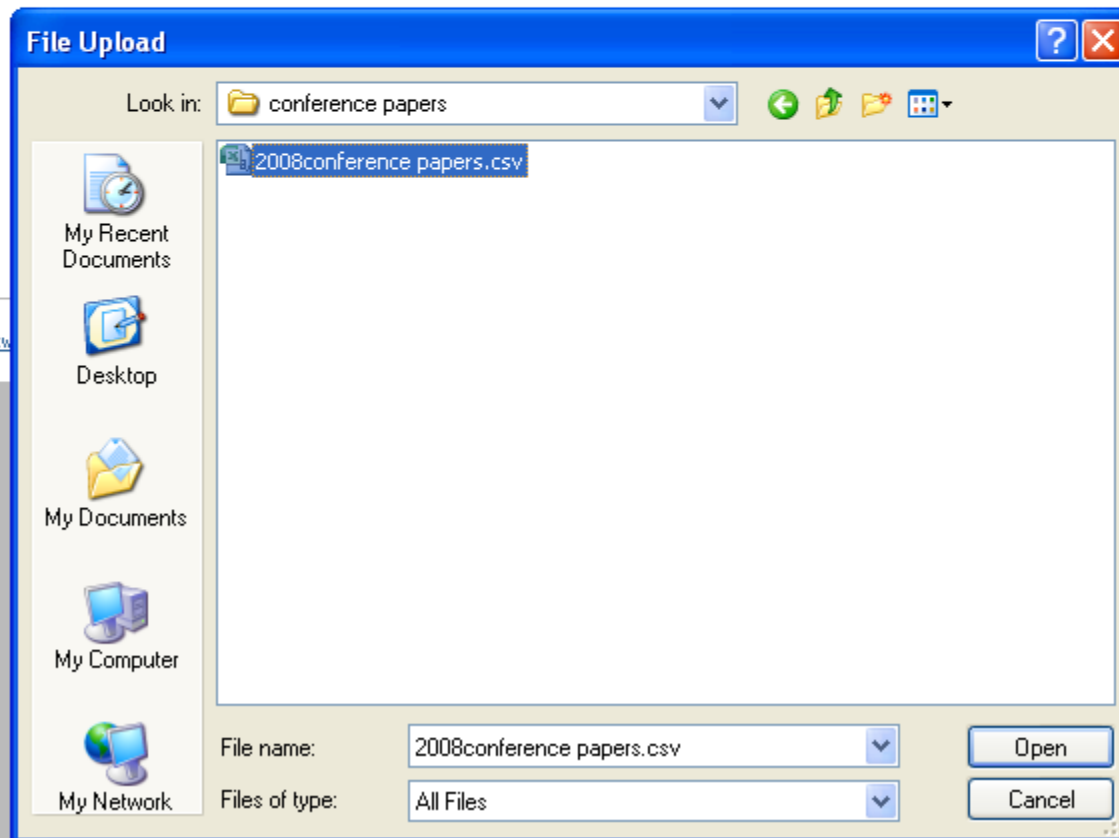
	A	B	C
1	id	dc.identifier.slug	dc.identifier.pmid
2	14474		19203316
3	14499		
4	14544		19182845
5	14382		
6	14559		
7	14560		
8	14577		19230511
9	14582		
10	14592		
11	14594		
12	14596		
13	14057		19429619
14	14071		
15	14082		19465945
16	14084		19448774
17	14085		19448772
18	14086		19448787
19	14091		
20	14107		19287105
21	14109		
22	14118		
23	14632		
24	14633		19010401
25	14106		
26	14113		

In this example the field that is empty will be replacing values with null values.

Example of a mapping to more than one collection

	A	B	C	D	E	F	G	H	
1	id	collection	dc.contrib	dc.date.ac	dc.date.av	dc.date.is	dc.identif	dc.identif	dc
2	14113	123456789/14655 123456789/13999	Kelderma	2009-07-1	2009-07-1	2009	Physica D:	1672789	ei
3	14167	123456789/14655 123456789/13999	Garny, A.	2009-07-1	2009-07-1	2009	Philosoph	1364503X	ei
4	14168	123456789/14655 123456789/13999	Christie, C	2009-07-1	2009-07-1	2009	Philosoph	1364503X	ei
5	14172	123456789/14655 123456789/13999	Beard, D.A	2009-07-1	2009-07-1	2009	Philosoph	1364503X	ei
6	14202	123456789/14655 123456789/13999	Wimalara	2009-07-1	2009-07-1	2009	Experime	9580670	ei
7	14237	123456789/14655 123456789/13999	Tawhai, M	2009-07-1	2009-07-1	2009	IEEE Engin	7395175	ei
8	14230	123456789/14655 123456789/13999	Ten, Tussc	2009-07-1	2009-07-1	2009	Experime	9580670	ei
9	14347	123456789/14655 123456789/13999	Cooling, M	2009-07-1	2009-07-1	2009	Biophysic	15420086	ei
10	14399	123456789/14655 123456789/13999	O'Brien, B	2009-07-1	2009-07-1	2009	Applied P	9478396	ei
11	14367	123456789/14655 123456789/13999	Tran, K.	2009-07-1	2009-07-1	2009	Biophysic	15420086	ei
12	14527	123456789/14655 123456789/13999	Kelderma	2009-07-1	2009-07-1	2009	American	3636135	ei
13	14573	123456789/14655 123456789/13999	Cairns, S.F	2009-07-1	2009-07-1	2009	Journal of	87507587	ei
14	14635	123456789/14655 123456789/13999	Ostby, I.	2009-07-1	2009-07-1	2009	PLoS Com	1553734X	ei

Browse to locate your files



Changes for items are shown below

[ResearchSpace@Auckland \(1.5.2\)](#) >
[Administer](#) >

Import metadata

Changes for item: 14642 (123456789/14654)

Add (dc.identifier.citation[en_US]): New Zealand Medical Journal 112 (1099), 429-430. (1999)

Add (dc.rights[en_US]): Items in ResearchSpace are protected by copyright, with all rights reserved, unless otherwise indicated. Previously published items are made available in accordance with the copyright policy of the publisher. Details obtained from <http://www.sherpa.ac.uk/romeo.php?id=598>

Add (dc.type[en_US]): Journal Article

Add (dc.publisher[en_US]): New Zealand Medical Association

Add (dc.subject.marsden[en_US]): Fields of Research::320000 Medical and Health Sciences

Add (dc.contributor.author[en_US]): Baker, G.E.

Add (dc.contributor.author[en_US]): Koelmeyer, T.D.

Add (dc.identifier.pmid): PMID10678227

Add (dc.title[en_US]): Death due to unrecognised myocardial infarction causing left ventricular rupture: Can we improve the diagnostic rate?

Remove (dc.identifier.pmid): 10678227

Adding items shown below

New item:

Add to collection (123456789/13999): Journal Articles 2009

Add (dc.date.issued): 2009

Add (dc2.bibliographicCitation.volume): 39

Add (dc.relation.ispartofseries): Cambridge Journal of Education

Add (dc.identifier.issn): 0305764X

Add (dc.contributor.author[en]): Baines, E.

Add (dc.contributor.author[en]): Rubie-Davies, C.

Add (dc.contributor.author[en]): Blatchford, P.

Add (dc2.bibliographicCitation.issue): 1

Add (dc2.bibliographicCitation.spage): 95-117

Add (dc.identifier.doi): 10.1080/03057640802701960

Add (dc.identifier.other): eid=2-s2.0-67651227052

Add (dc.description.statementofresponsibility): Baines, E., Institute of Education, University of London, London, United Kingdom
Auckland, New Zealand| Blatchford, P., Institute of Education, University of London, London, United Kingdom

Add (dc.source.uri): <http://dx.doi.org/10.1080/03057640802701960>

Add (dc.title[en]): Improving pupil group work interaction and dialogue in primary classrooms: Results from a year-long interve

Add (dc.identifier.citation[en]): Cambridge Journal of Education 39 (1), 95-117. (2009)

Add (dc.description.uri): http://sfx.auckland.ac.nz:3210/sfxld37&rft_id=info:doi/10.1080/03057640802701960

Apply changes

Cancel

Check everything before applying the changes, cancel if you see a mistake



Apply changes



Cancel

**It may take a while to apply the changes, wait till completed.
At the end of the process the apply changes and cancel button are gone.**