

Artframe

Connecting two Worlds

Roberto C. Ferrari

Curator of Art Properties, Avery Library

Melanie Wacker

Metadata Coordinator, Columbia University Libraries

Nov. 14, 2016, Metropolitan Museum of Art

Linked Data for Production (LD4P)

“The Andrew W. Mellon Foundation has awarded Stanford a \$1.5 million grant to support library initiatives that develop and advance the use of linked open data. Stanford Libraries will coordinate a team representing Columbia, Cornell, Harvard, Library of Congress and Princeton to upgrade the current infrastructure libraries use to create, store, and share bibliographic data.”

Source: <https://library.stanford.edu/news/2016/04/stanford-libraries-leads-collaborative-grant>

LD4*

LD4L (2014-2016): Collaborative project of Cornell University Library, Harvard Library Innovation Lab, and Stanford University Libraries.

LD4L-Labs (2016-2018): Cornell-lead collaborative project with Harvard University, Stanford University, and library researchers at the University of Iowa.

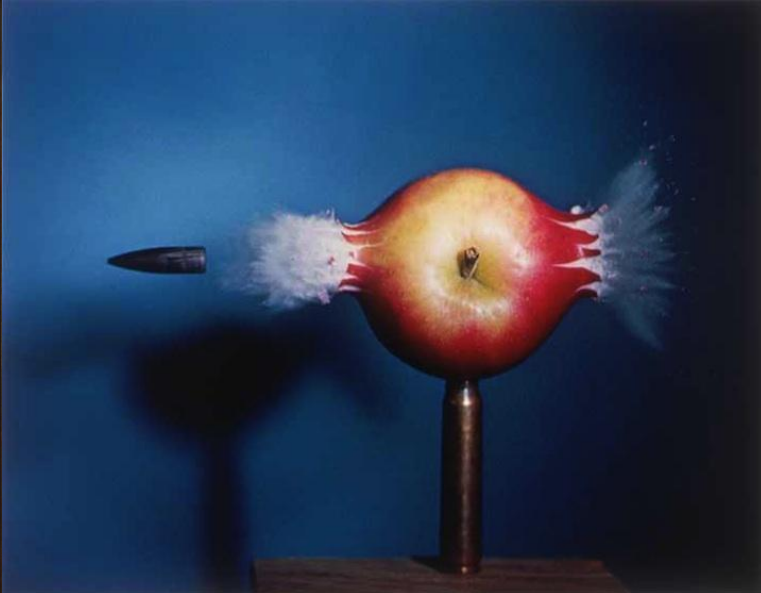
LD4P (2016-2018): Stanford-lead collaborative project with Columbia, Cornell, Harvard, Library of Congress, Princeton, and Stanford University to start transitioning traditional technical services workflows to linked open data.

LD4P Projects

- Columbia: Art objects (two & three dimensional)
- Cornell: Non-commercial LPs from the Hip Hop collection & rare materials
- Harvard: Library cartographic resources (printed maps, atlases, digital geospatial datasets, etc)
- Library of Congress: BIBFRAME 2.0 test, audio-visual material, Prints & Photographs, BIBFRAME & RDA
- Princeton: Archive of the philosopher Jacques Derrida (1930-2004); annotations
- Stanford: Tracer bullets; Performed music ontology

Artframe -- a BIBFRAME extension

- Many libraries own art objects
- Art objects have been described in MARC
- Larger institutions often have libraries as well as museums -- lack of communication
- BIBFRAME is supposed to work with “various content models” and accommodate “different needs for resource descriptions”
(Library of Congress (2012). *Bibliographic Framework as a Web of Data*. Page 15)





John Singleton Copley
Portrait of Myles Cooper
ca.1768, oil on canvas



Anna Hyatt Huntington
Cranes Rising
1934, bronze



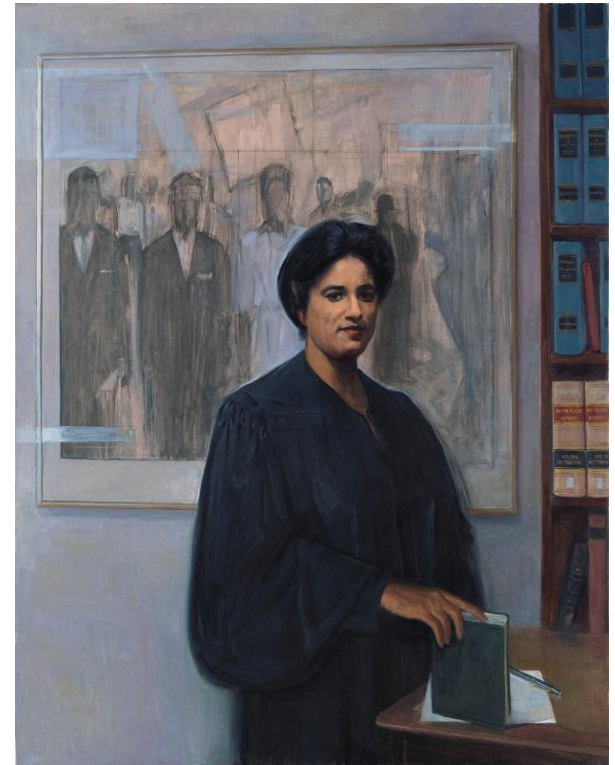
Suzuki Harunobu
The Brine Maidens
Japan, Edo period
1769-70, woodblock print



George Romney
Portrait of David Hartley, M.P.
1784



Alice Neel
Portrait of Jack Beeson
1979



Samuel Adoquei
Portrait of Constance Baker Motley
2015



Florine Stettheimer
Self-Portrait with Palette (Painter and Faun), ca. 1915



Florine Stettheimer
Portrait of Myself, 1923



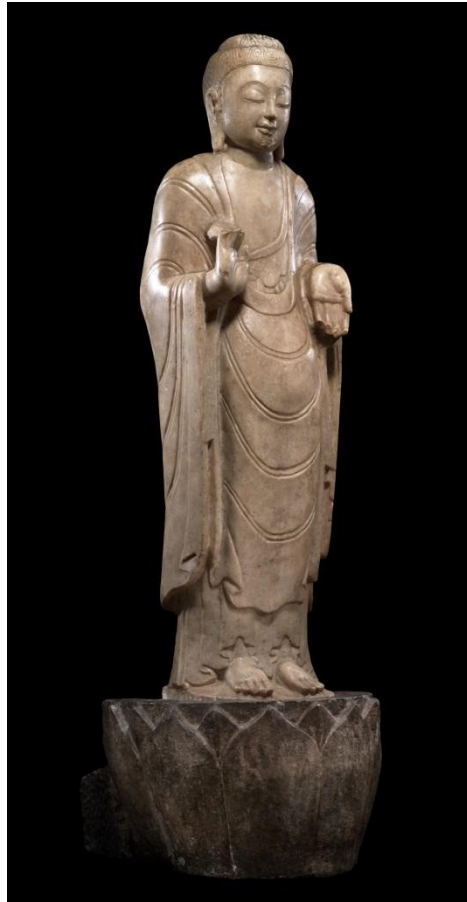
Arthur Rothstein
Girl at Gee's Bend (Artelia Bendolph)
1937, gelatin silver print



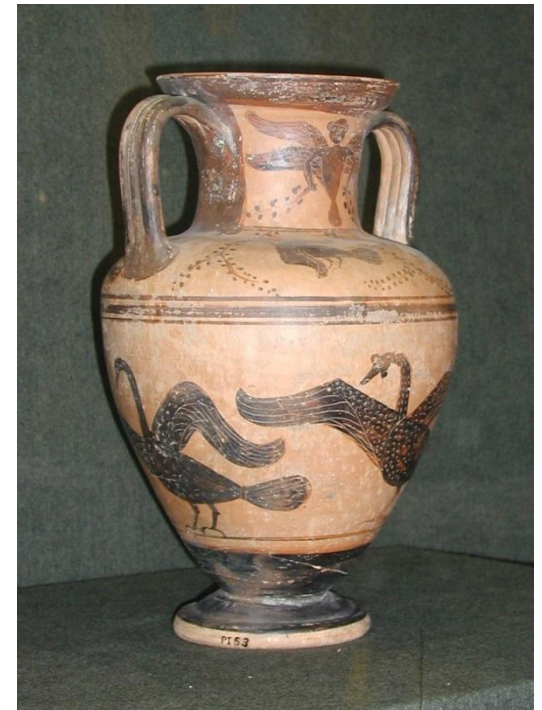
Bruce Davidson
Time of Change
1962, gelatin silver print



Plaque with a hunter and lion
Iran, 8th-7th century BCE
ivory or bone



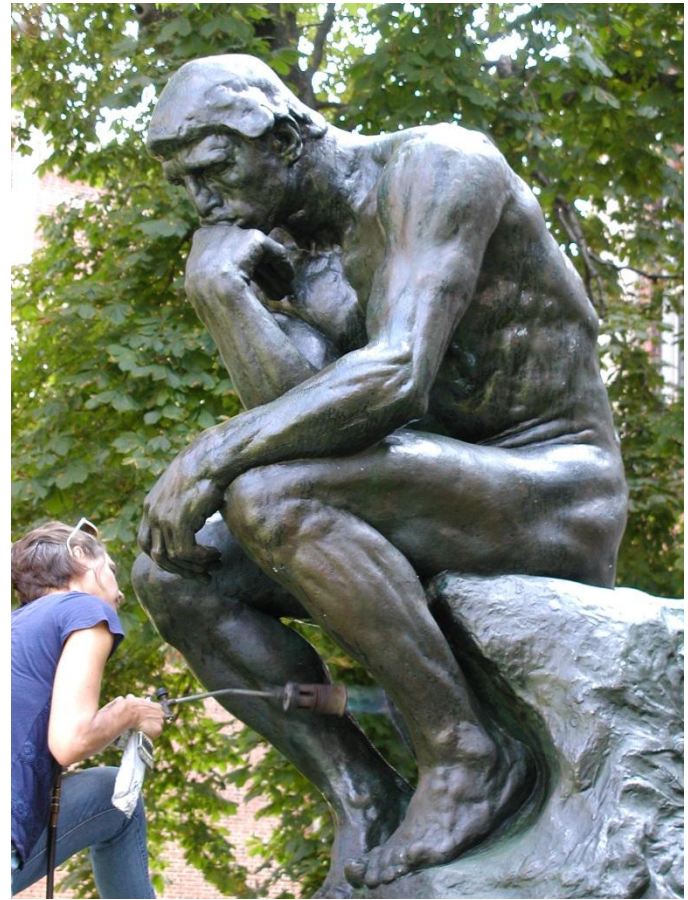
Standing Buddha, China
Northern Qi dynasty (550-577)
marble with limestone base



Etruscan black-figure amphora
9th-8th century BCE
earthenware



Daniel Chester French
Alma Mater
1903, bronze



Auguste Rodin
The Thinker
1930, bronze



Clement Meadmore, *Curl*, 1967, Cor-Ten steel
(conservation completed Fall 2015)



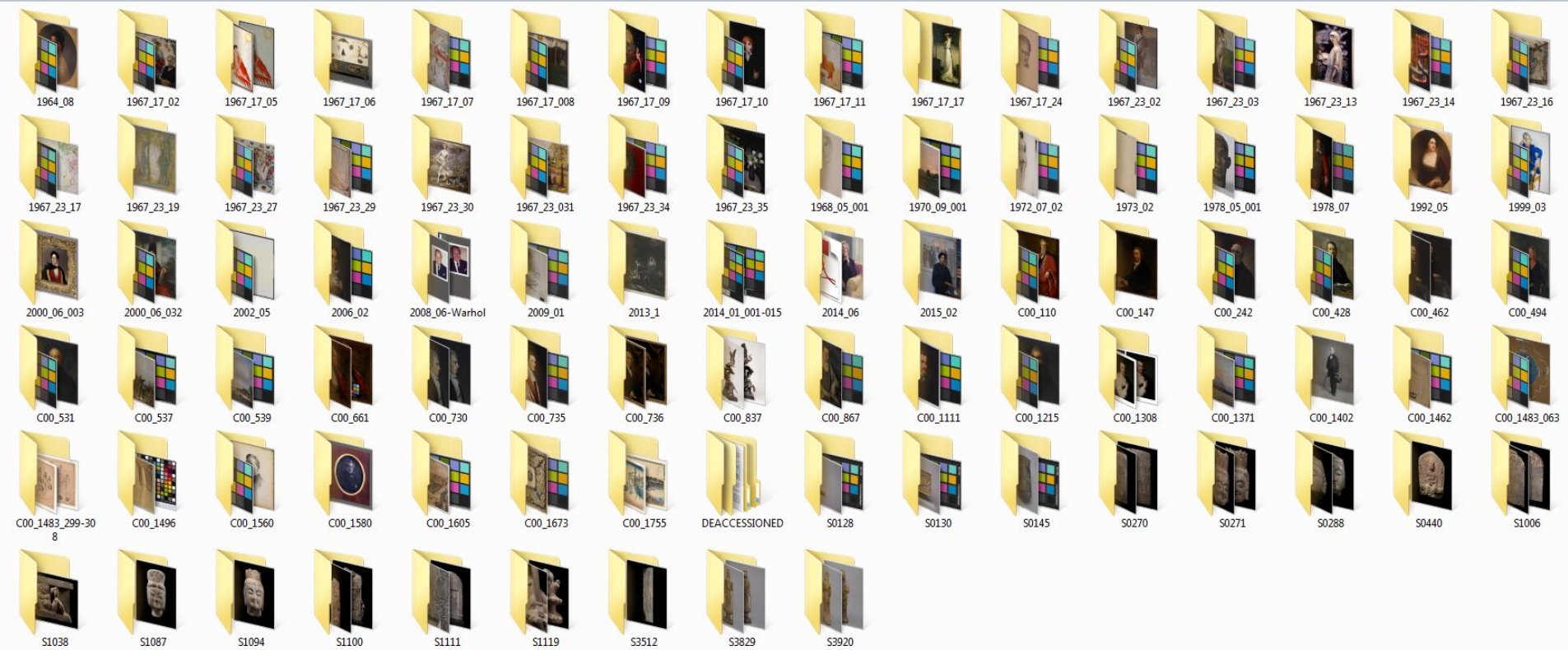
Students working in the lab
NYU Institute of Fine Arts Conservation Center



Virgin Mary polychrome wood
figurine, Mexico or South America,
18th century, with X-ray







INVENTORY-MASTER - Microsoft Excel

File Home Insert Page Layout Formulas Data Review View

Clipboard Font Alignment Number Styles

Normal_Sheet1 Normal Bad Good Neutral Calculation Check cell Explanatory... Hyperlink Input

AutoSum Fill Clear Sort & Find & Filter Select

D15 Roth, Frederick George Richard, 1872-1944

Accession Number	Classification Primary	Classification Secondary	Creator 1	LCNAF Linked Data 1	Qualifier 1	Role 1	Creator 2	LCNAF Linked Data 2	Qualifier 2	Role 2	Work Type	Title	Alternative Title	Portrait Subject	Portrait Subject LCNAF Linked Data	Date	Century	Earliest Date	Latest Date	Period	Culture	Creation Location	
1968.03.001	Sculpture		Meadmore, Clement	http://id.loc.gov/authorities/names/n50008158			Lippincott	http://id.loc.gov/authorities/names/n2010004776			Foundry	Public sculpture	The Curl			1968	20th century	1968	1968		Australian		
1977.13.000	Sculpture		Lipchitz, Jacques, 1891-1973	http://id.loc.gov/authorities/names/n50050817			Fonderia D'Arte Luigi Tommas				Foundry	Public sculpture	Bellerophon Taming Pegasus			Commissioned: 1967; installed: 1977	20th century	1967	1977		French	Pietrasanta, Tuscany, Italy	
1979.05.005	Sculpture		Verkade, Kees, 1941-	http://id.loc.gov/authorities/names/nr00000886								Public sculpture	Tightrope Walker			Commissioned: 1973; installed: 1979	20th century	1973	1979		Dutch		
1979.06.003	Sculpture		Schweitzer, Gertrude, 1909-	http://id.loc.gov/authorities/names/n5000347								Public sculpture	Flight				20th century	1979	1979		American		
1980.08.001	Sculpture		Unknown									Relief									Taiwanese	Taiwan	
1992.01.000	Sculpture		Bakalar, David	http://id.loc.gov/authorities/names/nr94034568								Public sculpture	Life Force			Commissioned: 1988; installed: 1992	20th century	1988	1992		American	United States	
1999.02.001	Sculpture		Archipenko, Alexander, 1887-1964	http://id.loc.gov/authorities/names/n8001458								Statuette	La Portuguese				20th century	1916	1916		Ukrainian	France	
2004.01.000	Sculpture		Wyatt, Greg	http://id.loc.gov/authorities/names/n97869837			Polich Tallix Art	http://id.loc.gov/authorities/names/n2010166281			Foundry	Public sculpture	Scholar's Lion				2004	21st century	2004	2004		American	Rock Tavern, New York, United States
2014.03.006	Sculpture		Zwillinger, Rhonda	http://id.loc.gov/authorities/names/n9807914								Shoe					ca. 1985	20th century	1980	1990		American	United States
				http://id.loc.gov/authorities/names/n9807914										Beethoven,	http://id.loc.gov/authorities/names/n9807914								

CLIO

Search filters: Art Properties, Location, Advanced Search

« Back to Results | « Previous | 2 of 9,618,512 | Next »

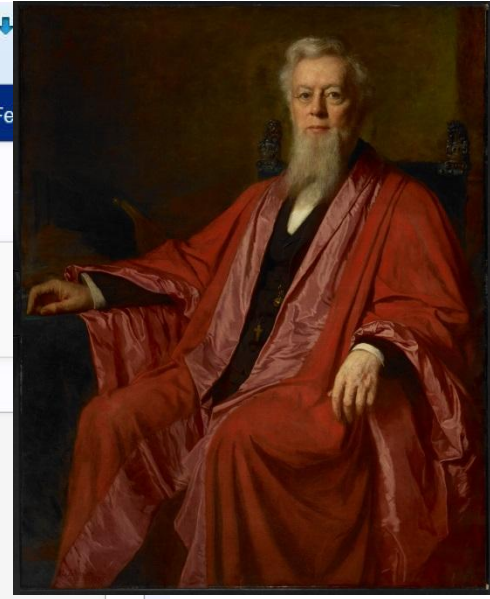
Print Email Send to Phone Add to My Saved List Export Display In Requests Start Over

Portrait of Frederick A. P. Barnard (1809-1889)

- Creator: Johnson, Eastman, 1824-1906, artist.
Title: Portrait of Frederick A. P. Barnard (1809-1889).
Produced: United States, 1886.
Physical Properties: 1 painting; 49 x 39 1/2 in. (124.4 x 100.3 cm). Oil on canvas.
Inscription: Signed and dated lower left: E. Johnson / 1886.
Notes: Plaque on frame: FREDERICK A. P. BARNARD, D.D., LITT., LL.D. / A.B. Yale College 1828 / President of the University of Mississippi 1856-1861 / President of Columbia College 1864-1889.
Credit Line: Commissioned by the Trustees, 1886.
Subjects: Barnard, Frederick A. P. (Frederick Augustus Porter), 1809-1889, depicted.
Subjects (Genre): Paintings (visual works) > American > 19th century. Portraits > American > 19th century.
Format: Art Work (Original)
Bookmark As: https://clio.columbia.edu/catalog/12003862

Available from:

Avery Art Properties - By appt. (Non-Circulating)
Today's Hours: 9am - 9pm
By appointment only. See the Avery Art Properties webpage
Call Number: C00.0110



Virtual Shelf Browse



Show

Hide

Full Screen

But Why linked data?

Library cataloging: a guide for a basic course,

Author: [Immroth, John Phillip.](#)
Title: Library cataloging: a guide for a basic course, by John Phillip Immroth and Jay E. Daily.
Published: Metuchen, N.J., Scarecrow Press, 1971.
Description: 202 p. illus. 22 cm.
LC Subjects: [Cataloging--Outlines, syllabi, etc.](#)
Also Listed Under: [Daily, Jay Elwood, author.](#)

Holdings Information:

Location (guide):	Offsite - Place Request for delivery within 2 business days
Call Number:	Z693 .I45
Status:	Not checked out

COLLECTIONS OF CORRESPONDENCE AND MANUSCRIPT DOCUMENTS

NAME OF COLLECTION: FABIAN ESSAYS--Collection

SOURCE: Purchase 54799C

SUBJECT: Fabian Essays in Socialism

DATES COVERED: 1890 NUMBER OF ITEMS: 50

Dramatic Museum Realia



munity

AAT, CCO, CDWA, CDWA Lite, CIDOC/CRM, MuseumDat, SPECTRUM, TGN, ULAN

AACR2, AGLS, CQL, DDC, FRAD, FRBR, FRSAD, GILS, ISBD, LCC, LCSH, MADS, MARC, MARC Relator Codes, MARCXML, MESH, METS, MIX, MODS, OAI-PMH, OAIS, OpenURL, PREMIS, RDA, Sears List of Subject Headings, SRU, SWAP, TEI, TextMD, TGM I, TGM II, VRA Core, XML, XML Schema, XOBIS, XPath, XSLT, Z39.50

DTD, OAI-PMH, VRA Core, XML, XMLSchema, XPath, XQuery, XSLT

Atom, DC, DCA, FOAF, indecs, Linked Data, MI, MODS, OAI-OP, OAIS, PREMIS, QDC, RDF, RSS, SGML, SKOS, TGM I, TGM II, Topic Maps

Museums

Strong

Semi-Strong

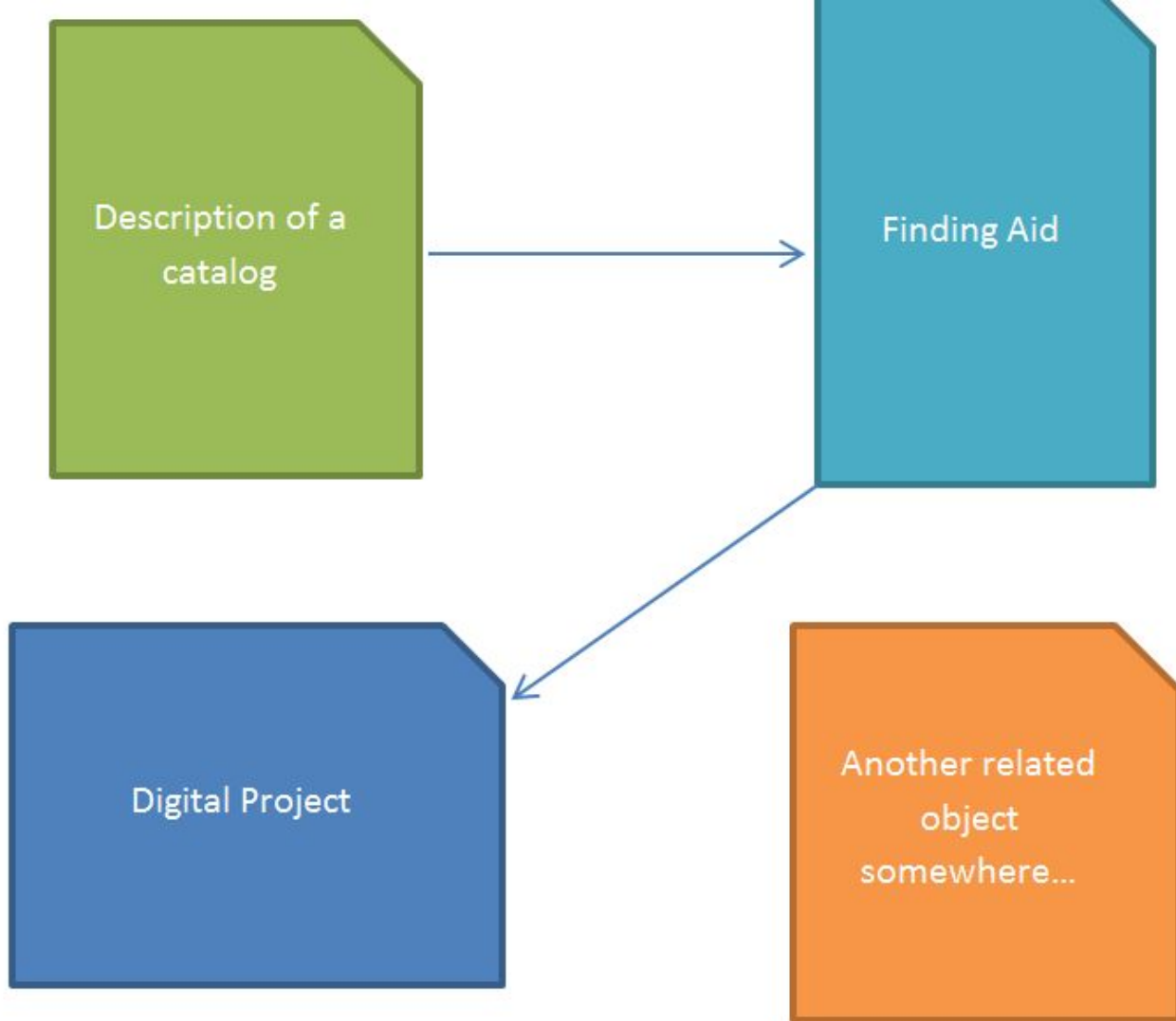
Semi-Weak

Weak

AES Core Audio, AES Process History, CanCore, CCO, DC, DCAM, DTD, FGDC/CSDGM, GEM, IEEE/LOM, MEI, METS Rights, OAI-ORE, PB Core, QDC, RDF, SGML, TGN, XQuery

Libraries

APPM, Atom, CDWA, CDWA Lite, CIDOC/CRM, DACS, DwC, EAC-CPF, EAD, EML, FOAF, indecs, ISAAR(CPF), ISO 19115, Linked Data,



Semantic Web to the Rescue?

- Linking data (resources) instead of documents (information resources)
- Identifying resources using URIs instead of text strings
- Structured data instead of unstructured data
- Explicit semantics instead of ambiguity (semantics = meaning)
- Goal: machine consumption in addition to human consumption

What is Linked Data?

Component part of the Semantic Web

Building blocks:

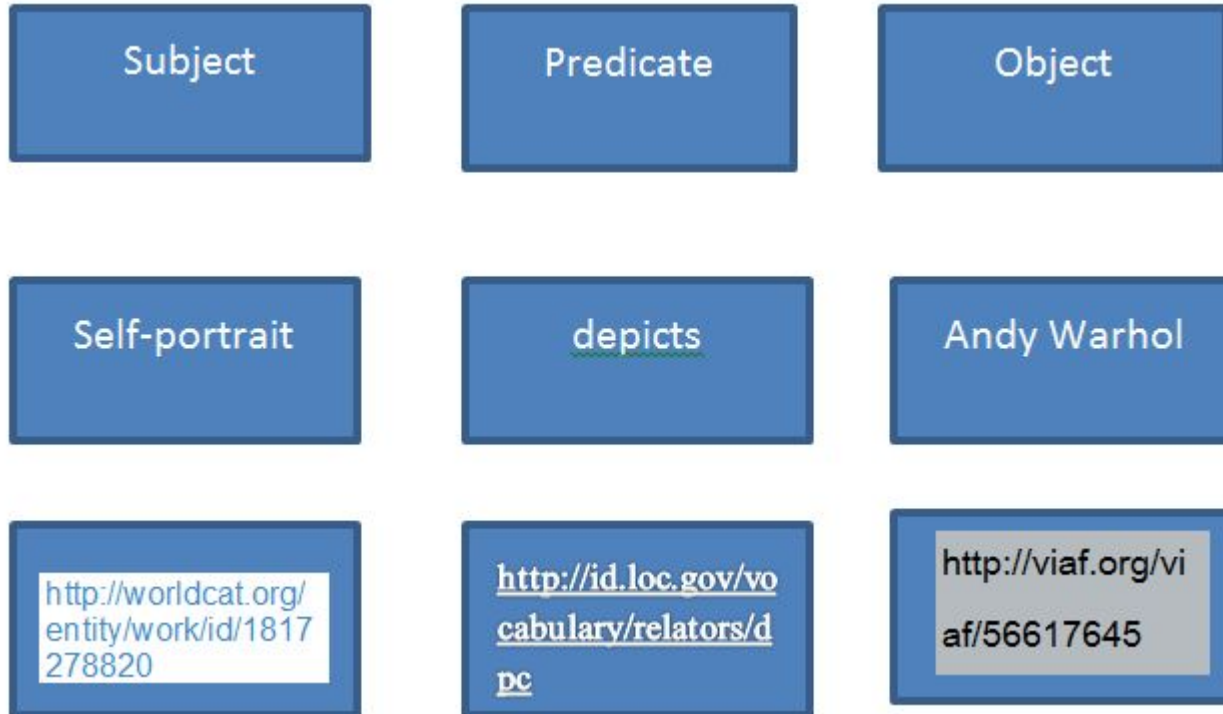
- URIs or IRIs (resource identifiers)
- HTTP (hypertext transfer protocol)
- Structured data using controlled vocabulary terms and dataset definitions expressed in Resource Description Framework [RDF] serialization formats such as RDFa, RDF/XML, N3, Turtle, or JSON-LD
- Linked Data Platform

(source: https://en.wikipedia.org/wiki/Linked_data#Components)

RDF--Resource Description Framework

- Used to express linked data
- Graphs, not records
- RDF statements are called triples
- RDF triples consist of a subject, a predicate, and an object

RDF Triple



RDF Graph



Linked Data Vocabularies & Ontologies

- Vocabularies vs. value vocabularies
- Define classes of objects, the relationship of objects, and the properties of resources
- Often expressed in RDFS or OWL
- Examples: FOAF, dcterms, schema.org, BIBFRAME ...

Linked Data in Libraries

- ID.LOC.GOV
- Bibliographic Ontologies (e.g. schema.org + bib. Extension; BIBFRAME)
- Linked Data projects

LC Linked Data Service

Authorities and Vocabularies



Search

Enter Keyword or Phrase

All
LC Subject Headings
LC Name Authority File
LC Classification
LC Children's Subject Headings

**Please Note: LC Classification entries are not included in general search results. You must explicitly select LC Classification in order to search the scheme. This is temporary while the impact of adding LCC to the current system is better understood.

[Search](#) [Reset](#)

Available Datasets

The Linked Data Service provides access to commonly found standards and vocabularies promulgated by the Library of Congress. This includes data values and the controlled vocabularies that house them. The following are currently offered as part of this service:

- | | | |
|--|--|--|
| <ul style="list-style-type: none">> LC Subject Headings> LC Name Authority File> LC Classification> LC Children's Subject Headings> LC Genre/Form Terms> LC Medium of Performance Thesaurus for Music> LC Demographic Group Terms | <ul style="list-style-type: none">> MARC Relators> MARC Countries> MARC Geographic Areas> MARC Languages> ISO639-1 Languages> ISO639-2 Languages> ISO639-5 Languages> Extended Date/Time Format | <p>Schemes and smaller codelists</p> <ul style="list-style-type: none">> Identifiers> Carriers> Content Types> Media Types> Resource Types> Description Convention |
|--|--|--|

Andy Warhol (1928-1987)

	Country :	États-Unis
	Language :	anglais
	Gender :	masculin
	Birth :	Pittsburgh (Pa.), 06-08-1928
	Death :	New York (N.J.), 22-02-1987
	Note :	Peintre, graphiste, cinéaste
	Field :	Peinture Arts graphiques Audiovisuel
	Variant of the name :	Andrew Warhola (1928-1987)
ISNI :	ISNI 0000 0001 2134 0483	

Occupations (70 documents)	Documents about this author	Pages in data.bnf.fr (2 page)	Sources and references
-------------------------------	--------------------------------	----------------------------------	---------------------------

Occupations

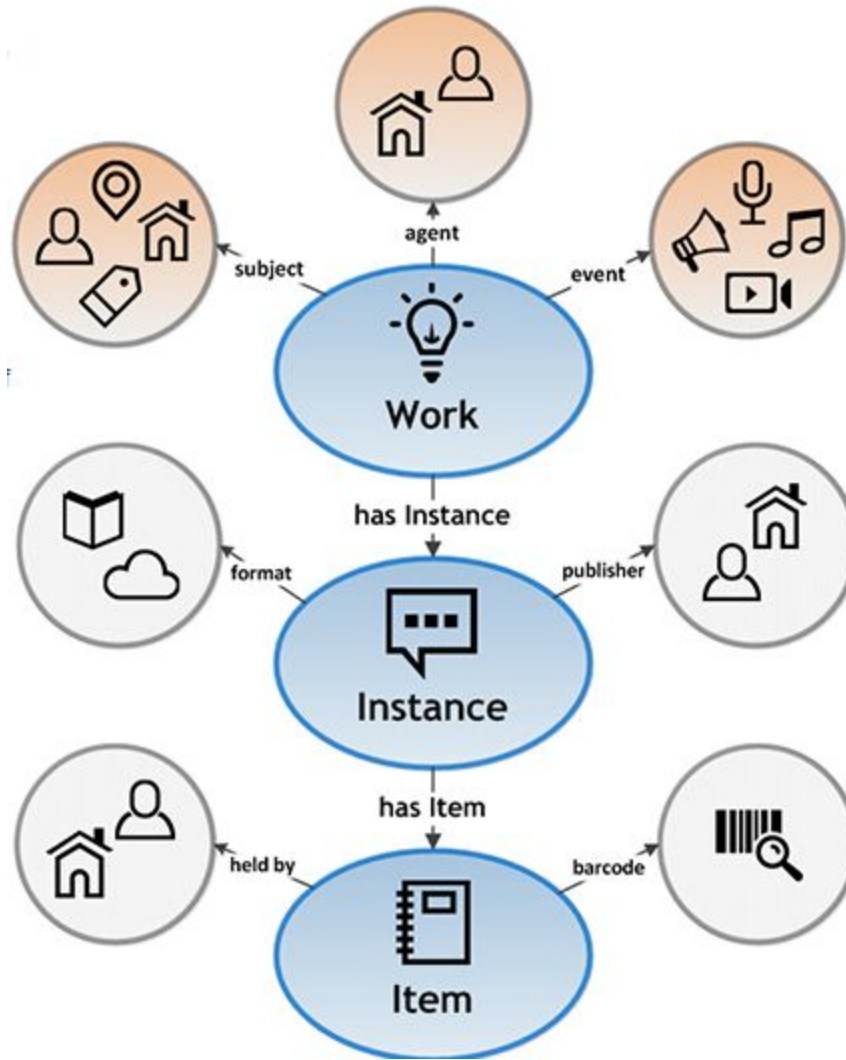
See all documents (70) Digitized documents only (1)

▶ Auteur du texte (23)	▶ Contributeur (2)	▶ Compositeur (1)
▶ Illustrateur (17)	▶ Scénariste (1)	▶ Photographe (1)
▶ Réalisateur (12)	▶ Sérigraphe (1)	▶ Auteur ou responsable intellectuel (2)
▶ Décors (3)	▶ Auteur adapté (1)	▶ Autre (3)
▶ Graveur (2)	▶ Costumes (1)	

Bibliographic Framework Initiative (BIBFRAME)

- Develop a new format that accommodates different content rules and data models
- Determine aspects of MARC that should be retained and translate to a LD model
- Based on Semantic Web and Linked Data technologies
- Foster reuse of existing rich metadata
- Plan for migrating existing metadata into a new structure
- Integrate bibliographic metadata with other rich metadata on the Web

(slide courtesy of Rebecca Guenther)



Linked Data in Art

- Getty vocabularies
- Art ontologies
- Linked Data Projects

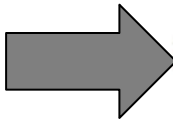
Art Vocabularies

- The Art & Architecture Thesaurus (AAT)
- The Getty Thesaurus of Geographic Names (TGN)
- The Union List of Artists Names (ULAN)
- Thesaurus for Graphic Materials (on id.loc.gov)

Art & Architecture Thesaurus (AAT)

 **Getty Vocabularies: LOD** [SPARQL](#) [Queries](#)

acrylic paintings (visual works)



Source: <http://vocab.getty.edu/aat/300181918>

[Subject \(87\)](#) [Predicate](#) [Object](#) [All](#)

Predicate	Object
rdf:type	gvp:Concept
rdfs:seeAlso	http://www.getty.edu/vow/AATFullDisplay?find=&logic
dcterms:created	1990-06-06T00:00:00
dcterms:modified	1998-06-15T00:00:00, 2001-07-26T22:04:07, 2007-10-04T04:26:37, 2011-01-07T17:22:20, 2011-

CIDOC-CRM

- CIDOC = International Committee for Documentation of ICOM (International Council of Museums)
- CRM = Conceptual Reference Model
- Official ISO standard since 2006
- Currently in version 5.0.4

Yale Center for British Art (CIDOC-CRM)

Search Details

Creator	Francis Hayman, 1707/8-1776, British
Title	The Good Samaritan
Date	between 1751 and 1752
Medium	Oil on canvas
Dimensions	78 1/2 × 48 1/2 inches (199.4 × 123.2 cm)
Credit Line	Yale Center for British Art, Paul Mellon Fund
Accession Number	B1979.20
Collection	Paintings and Sculpture
Link to This Record	http://collections.britishart.yale.edu/vufind/Record/1669220
Subject Terms	Bible bishop (prelate) blood blood (animal material) bottle costume donkey injuries levite men mule New Testament nude pity pouring priest reading religious and mythological subject scroll (information artifact) the good Samaritan (Luke 10:30-37) traveler
Place	Cusworth Cusworth Hall England United Kingdom



cropped to image, recto, unframed
Public Domain | Zoom | Download



cropped to image, recto, unframed



recto, unframed



framed, recto



framed, verso

Request additional photography

Machine-readable form in CIDOC-CRM

URI: <http://collection.britishart.yale.edu/id/object/499>

[View Collections Online Record](#)

Property	Value
?:P102_has_title	▪ http://collection.britishart.yale.edu/id/object/499/title/1
?:P104_is_subject_to	▪ http://collection.britishart.yale.edu/id/object/499/objectRight
?:P12i_was_present_at	▪ http://collection.britishart.yale.edu/id/exhibition/389 ▪ http://collection.britishart.yale.edu/id/exhibition/757
?:P138i_has_representation	▪ http://deliver.odai.yale.edu/content/id/26b64470-f2cc-4946-b756-92022049b8a9/format/1 ▪ http://deliver.odai.yale.edu/content/id/26b64470-f2cc-4946-b756-92022049b8a9/format/3 ▪ http://deliver.odai.yale.edu/content/id/26b64470-f2cc-4946-b756-92022049b8a9/format/6 ▪ http://deliver.odai.yale.edu/content/id/2ddbdeb2-bae2-4230-9855-c4449b09967d/format/1 ▪ http://deliver.odai.yale.edu/content/id/2ddbdeb2-bae2-4230-9855-c4449b09967d/format/3 ▪ http://deliver.odai.yale.edu/content/id/2ddbdeb2-bae2-4230-9855-c4449b09967d/format/6 ▪ http://deliver.odai.yale.edu/content/id/eof8caf2-852f-4b49-8600-2e31750857b5/format/1 ▪ http://deliver.odai.yale.edu/content/id/eof8caf2-852f-4b49-8600-2e31750857b5/format/3 ▪ http://deliver.odai.yale.edu/content/id/eof8caf2-852f-4b49-8600-2e31750857b5/format/6 ▪ http://deliver.odai.yale.edu/content/id/ea66759c-d381-4bee-8a6b-8333c8506086/format/1 ▪ http://deliver.odai.yale.edu/content/id/ea66759c-d381-4bee-8a6b-8333c8506086/format/3 ▪ http://deliver.odai.yale.edu/content/id/ea66759c-d381-4bee-8a6b-8333c8506086/format/6 ▪ http://scale.ydc2.yale.edu/iiif/26b64470-f2cc-4946-b756-92022049b8a9 ▪ http://scale.ydc2.yale.edu/iiif/2ddbdeb2-bae2-4230-9855-c4449b09967d ▪ http://scale.ydc2.yale.edu/iiif/eof8caf2-852f-4b49-8600-2e31750857b5 ▪ http://scale.ydc2.yale.edu/iiif/ea66759c-d381-4bee-8a6b-8333c8506086
?:P1_is_identified_by	▪ http://collection.britishart.yale.edu/id/object/499/TMS ▪ http://collection.britishart.yale.edu/id/object/499/ccd ▪ http://collection.britishart.yale.edu/id/object/499/inventory-number ▪ http://collection.britishart.yale.edu/id/object/499/lidoRecID
?:P24i_changed_ownership_through	▪ http://collection.britishart.yale.edu/id/object/499/acquisition
?:P2_has_type	▪ http://collection.britishart.yale.edu/id/thesauri/300033618 ▪ http://vocab.getty.edu/aat/300033618
?:P3oi_custody_transferred_through	▪ http://collection.britishart.yale.edu/id/object/499/acquisition
?:P39i_was_measured_by	▪ http://collection.britishart.yale.edu/id/object/499/measurement/1
?:P43_has_dimension	▪ http://collection.britishart.yale.edu/id/object/499/height ▪ http://collection.britishart.yale.edu/id/object/499/measurement/1/height ▪ http://collection.britishart.yale.edu/id/object/499/measurement/1/width ▪ http://collection.britishart.yale.edu/id/object/499/width
?:P45_consists_of	▪ http://vocab.getty.edu/aat/300014078 ▪ http://vocab.getty.edu/aat/300230810

VRA Ontology

Vocabulary for representing entities in the VRA data model.

The Ontology was developed by [Jeff Mixter](#), [Rebecca Guenther](#), [Trish Rose-Sandler](#), [Michael Dulock](#) and [Esme Cowles](#)

Table of Contents

Classes

[Administrative Area](#) | [Agent](#) | [City](#) | [Civic Structure](#) | [Collection](#) | [Continent](#) | [Culture](#) | [Data Set](#) | [Duration](#) | [Event](#) | [Image](#) | [Inscription](#) | [Intangible](#) | [Material](#) | [Organization](#) | [Person](#) | [Place](#) | [Quantitative Value](#) | [Quantity](#) | [State](#) | [Structured Value](#) | [Style Period](#) | [Technique](#) | [Work](#) |

Object Properties

[area](#) | [author](#) | [base](#) | [based on](#) | [builder](#) | [cartoon for](#) | [circumference](#) | [collector](#) | [commissioner](#) | [component of](#) | [composer](#) | [contractor](#) | [copy of](#) | [count](#) | [counter proof for](#) | [creative activity](#) | [creator](#) | [cultural context](#) | [dealer](#) | [decorator](#) | [depicted in](#) | [depicts](#) | [depth](#) | [derived from](#) | [designed for](#) | [designer](#) | [developer](#) | [diameter](#) | [director](#) | [distance between](#) | [donator](#) | [drafter](#) | [drawer](#) | [duration](#) | [editor](#) | [engineer](#) | [exhibited at](#) | [facsimile of](#) | [financier](#) | [formerly larger context for](#) | [formerly part of](#) | [former owner](#) | [former repository](#) | [former site](#) | [has cartoon](#) | [has component](#) | [has context](#) | [has copy](#) | [counter proof is](#) | [has culture](#) | [has facsimile](#) | [has image](#) | [has impression](#) | [has inscription](#) | [has model](#) | [has plan](#) | [has printing plate](#) | [has prototype](#) | [has replica](#) | [has study](#) | [has style period](#) | [technique](#) | [has version](#) | [height](#) | [image of](#) | [inventory level](#) | [is related to](#) | [larger context for](#) | [length](#) | [location of](#) | [manufacturer](#) | [mate of](#) | [material](#) | [model for](#) | [owner](#) | [painter](#) | [partner in set with](#) | [part of](#) | [pendant of](#) | [performer](#) | [photographer](#) | [place of creation](#) | [place of discovery](#) | [place of exhibition](#) | [place of installation](#) | [place of intention](#) | [place of ownership](#) | [place of performance](#) | [place of publication](#) | [place of repository](#) | [place of site](#) | [plan for](#) | [preparatory for](#) | [printer](#) | [printing plate for](#) | [producer](#) | [programmer](#) | [prototype for](#) | [relief for](#) | [replica of](#) | [restorer](#) | [running time](#) | [source for](#) | [study for](#) | [venue for](#) | [version of](#) | [was alteration](#) | [was broadcast](#) | [was commission](#) | [was created](#) | [was designed](#) | [was destroyed](#) | [was discovered](#) | [was performed](#) | [was presented](#) | [was produced](#) | [was published](#) | [was restored](#) | [weight](#) | [width](#) | [writer](#) |

The Intersection: Libraries AND Art

FRBRoo

“The FRBRoo is a formal ontology intended to capture and represent the underlying semantics of bibliographic information and to facilitate the integration, mediation, and interchange of bibliographic and museum information.”

A working group formed in 2003 aimed to develop a formal ontology “ a) Expressing the IFLA FRBR model with the concepts, tools, mechanisms, and notation conventions provided by the CIDOC CRM, and: b) Aligning (possibly even merging) the two object-oriented models with the aim to contribute to the solution of the problem of semantic interoperability between the documentation structures used for library and museum information, ...”

The Artframe Project

Objectives:

- Evaluate the suitability of the BIBFRAME model and vocabulary for describing art objects, both two-dimensional (e.g. paintings, photographs) and three-dimensional (e.g. sculptures, ceramics).
- Identify and document any descriptive needs of art objects that are currently not covered by BIBFRAME.
- Evaluate other linked data ontologies and initiatives in the art domain.
- Develop a profile for the description of art objects.
- Convert a selection of art resources cataloged according to the Art Properties collection's local schema to the profile.
- Engage with related projects in the museum/art library domain, including the Library of Congress Prints and Photographs Division.
- Participate in data exchange with other partners.
- Develop workflow to connect public facing linked data to MARC circulation and other inventory data in spreadsheets or other sources.
- Evaluate the project and share recommendations.

The Columbia Project Team

Project team consisting of librarians and domain specialists

Amber Billey (Metadata Librarian)

Roberto C. Ferrari (Curator of Art Properties)

Kate Harcourt (Director, Original and Special Materials Cataloging)

Erin Petrella (Metadata Assistant; until August 2016y)

Margaret Smithglass (Registrar and Digital Content Librarian, Avery Library)

Project Coordinator: Melanie Wacker (Metadata Coordinator)

Project wiki: <https://wiki.duraspace.org/display/LD4P/Columbia>

Pre-project Activities

- Create test dataset in spreadsheet form representing a variety of art formats
- Reconcile spreadsheet data to external controlled vocabularies
- Characterize objects in the Art Properties collection based on sample data
- Survey existing linked data developments in the art domain
- Map Art Properties data to Bibframe 1.0
- Document issues and omissions in BIBFRAME 1.0 relating to art descriptions
- Map Art Properties data to [VRA RDF](#)

Characterization of Sample Data

Sample data describing art objects in the Art Properties collection. Subset of the overall collection, so should not be seen to represent the entire collection

Formats

Events

Physical Description

Creators

Location

Titles

Acquisitions Type Information

“Ofness” vs. “Aboutness”

Literature Review

- Contemporary literature on art and linked data
- Information-seeking behavior for art and visual resources
- Non-MARC metadata schema development and modeling for art and visual resources
- Mapping descriptions for art and visual resources into MARC

Artframe Extension Group

- Columbia Project Team
- Penny Baker (Clark Art Institute)
- LC's Prints & Photographs Division
- ☐ Paul Frank
- ☐ Arden Alexander
 - ARLIS/NA Cataloging Advisory Committee:
- ☐ Chair: Marie-Chantal L'Écuyer-Coelho
- ☐ Board Liaison: Jamie Lausch Vander Broek
- ☐ ALA Committee on Cataloging: Description & Access (CC:DA) Liaison: Karen Stafford
- ☐ ALA MARC Advisory Committee Liaison: John A. Maier
- ☐ ALA Subject Analysis Committee (SAC) Liaison: Sherman Clarke
- ☐ Members: Bronwen Bitetti, Tamara Fultz, Maria Oldal

Use Cases

Title (Goal)	2.5 Part:Whole relationships
Mode of use	Collection management, cataloging/inventory, curatorial, exhibition
Primary Stakeholders (who uses it)	Collection managers, curators
Scope	Discoverability
Priority	Medium
Story	<p>A gift of 10 engravings from an 18th-century portfolio of prints has been received, but the original portfolio was published with 15 engravings. The collection manager wants to identify other institutions who may have the entire portfolio to determine how best to catalog and inventory this gift.</p> <p>A museum owns a collection of various porcelain Sèvres dishes custom-made for a member of a French aristocratic family, and they are want to identify other institutions that own related pieces from this set for an upcoming exhibition.</p>
Submitted/updated by:	Roberto Ferrari 9/8/16

Use Case Categories

1. Names
2. Related Works
3. Genre; Facets; Types; WorkType; Classification; Styles
4. Physical Characteristics; Properties
5. Condition
6. Object History
7. Related Images of a Work
8. Subject/Aboutness
9. Annotations
10. Titles
11. Administrative metadata
12. User contributed data

Ontology Extension Development

1.2 Reconcile name changes seamlessly in discovery systems	Agent	hasAuthority	
1.3 Reconcile different name forms seamlessly in discovery systems	Agent	hasAuthority	
1.4 Find all artists who received a given award	Agent	Awards	
1.5 Relating Agents to Works	Agent	Role	Works
2.0a The work is related to another work	Works	related	
2.0b Discover works held by the same institution	Works	Agent	heldby
2.1 Discover the works held other institutions	Works	Agent	heldby

Mapping to BF 2.0

(fictional mapping to visualize the process)

Local Element	BIBFRAME	Other
Title	bf:title	
Dimensions	bf:dimensions	
Portrait subject		relator:dpc
Culture		vra:culturalContext

Inscriptions/Signatures

bf:note [a bf:Note ;

bf:noteType “Inscriptions/ Signatures” ;

Or

vra:hasInscription ?

Or something else?

Tools

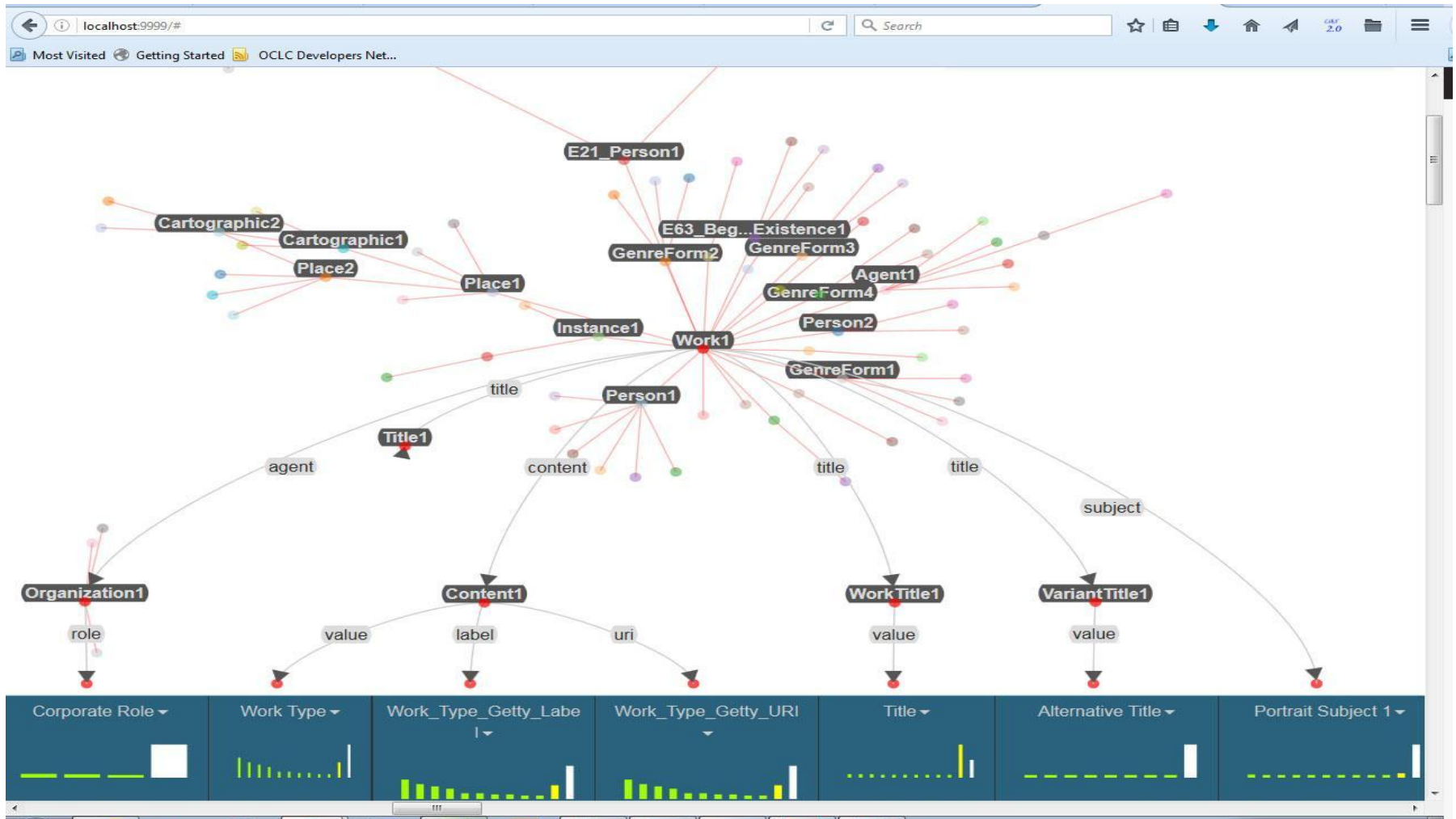
- OpenRefine
- KARMA: A Data Integration Tool
- VitroLib
- Transformation Tool

Tools: LODRefine for Reconciling Data

Country	Country_Getty	Country_Getty_L	Country_latitude	Country_longitude
Japan	Japan	http://vocab.getty.edu/tgn/1000120	36	138
United States	United States	http://vocab.getty.edu/tgn/7012149	38	-98
United States	United States	http://vocab.getty.edu/tgn/7012149	38	-98
China	China	http://vocab.getty.edu/tgn/1000111	35	105

Classification_P	Classification_F	Classification_P
Decorative arts	decorative arts	http://vocab.getty.edu/aat/300054168
Decorative arts	decorative arts	http://vocab.getty.edu/aat/300054168
Decorative arts	decorative arts	http://vocab.getty.edu/aat/300054168
Decorative arts	decorative arts	http://vocab.getty.edu/aat/300054168

Tools: Karma for Mapping and Visualization



What is VitroLib?

VitroLib is an ontology-based cataloging editor enabling manual cataloging in RDF based on a generalized bibliographic ontology with extensions for specialized cataloging. Built on Vitro, a generalized semantic web ontology and instance editor with customizable browsing, VitroLib is a joint product of the Mellon-funded Linked Data for Libraries Labs and Linked Data for Production projects.

With VitroLib, you can:

- Create or load ontologies in OWL format
- Edit instances and relationships
- Build a public web site to display your data
- Search your data

Search VitroLib



Admin Panel | [Edit this individual](#)

Verbose property display is **off** |

Resource URI: <http://vitrolib.ld4p.library.cornell.edu/individual/n677>

Andy Warhol | | Monograph | Text

- Titles
- Contributors
- Topics
- Genre And Form
- Time & Place
- Awards
- Related Works
- Instances
- Other
- View All

Titles

has preferred title

has title

What's next?

- In-person meeting in Washington DC (Nov. 17-18)
- More modelling!
- More mapping!
- More testing!

Questions?

mw2064@columbia.edu

rcf2123@columbia.edu